



# PORT AINE

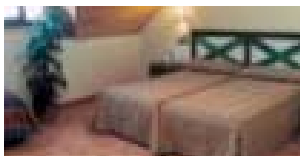
*Blessed with spectacular scenery, Port Aine is one of Spain's largest ski resorts*



Port-Ainé enjoys an unrivalled location in the Catalan Pyrenees at 2,440 m altitude, it is blessed with spectacular scenery it is one of Spain's largest ski resorts. Because of its privileged position on the north side of the mountains, the snow there is always in very good condition. Port-Ainé opened its doors as a winter ski resort in 1986 and now extends to 44km of downhill slopes between 1650m and 2440m elevation. Some of the best Catalan skiing for beginners to intermediates exists here including the perfectly named Bella Vista green run which snakes along the ridge and through the pines from the 2440m Pic de l'Orri and for intermediates the scintillating 2.3km Les Pilones red run. Continuing the multi activity theme there are countless options besides the pistes including the remodelled and extended snowpark, dogsled excursions, ski bikes and some spectacular snow shoe circuits to the most picturesque corners of the domain and 10km of cross country ski tracks.

[www.port-aine.com](http://www.port-aine.com)

## ACCOMMODATION



### HOTEL PORT AINE 3\*

The Port Aine 2000 Hotel is located conveniently by the ski slopes making it one of the best hotels to stay at while in town. This hotel is characterized by a combination of modern comfort and boasts modern amenities in every guestroom with superb service. Facilities include a gym and sauna, internet access and an excellent restaurant.



## ACTIVITIES

- Dog Sledge trips
- Snow shoe walks
- Swimming pool
- Bowling Alley
- Disco
- Restaurants & shops

## RESORT FACTS

• Snowboarding	Yes
• Cross country skiing	Yes
• Terrain park	Yes
• Highest lift	8008ft
• Vertical drop	2593ft
• Resort Altitude	2449m
• Longest run	5km
• Number of runs	33
• Snowmaking	88 snow cannons
• Number of lifts	9
• Mountain restaurants	Yes
• Travel information	By air to Barcelona / Toulouse
• Transfer from airport	3hrs

## STOPOVER/EXCURSIONS

Barcelona

